

STAT5B antibody - middle region
Rabbit Polyclonal Antibody
Catalog # AI11136**Specification**

STAT5B antibody - middle region - Product Information

Application	WB, IHC
Primary Accession	P42232
Other Accession	NM_011489 , NP_035619
Reactivity	Human, Mouse, Rat, Rabbit, Zebrafish, Pig, Goat, Sheep, Horse, Bovine, Dog
Predicted Host	Human, Rabbit, Pig, Chicken, Horse, Dog
Clonality	Rabbit
Calculated MW	Polyclonal 86kDa KDa

STAT5B antibody - middle region - Additional Information**Gene ID** 20851**Other Names**

Signal transducer and activator of transcription 5B, Stat5b

Format

Liquid. Purified antibody supplied in 1x PBS buffer with 0.09% (w/v) sodium azide and 2% sucrose.

Reconstitution & Storage

Add 100 ul of distilled water. Final anti-STAT5B antibody concentration is 1 mg/ml in PBS buffer with 2% sucrose. For longer periods of storage, store at 20°C. Avoid repeat freeze-thaw cycles.

Precautions

STAT5B antibody - middle region is for research use only and not for use in diagnostic or therapeutic procedures.

STAT5B antibody - middle region - Protein Information**Name** Stat5b**Function**

Carries out a dual function: signal transduction and activation of transcription. Mediates cellular responses to the cytokine KITLG/SCF and other growth factors. Binds to the GAS element and activates PRL-induced transcription. Positively regulates hematopoietic/erythroid differentiation.

Cellular Location

Cytoplasm. Nucleus. Note=Translocated into the nucleus in response to phosphorylation

Tissue Location

In the virgin, found in most tissues. Particularly abundant in muscle tissue of virgin and lactating

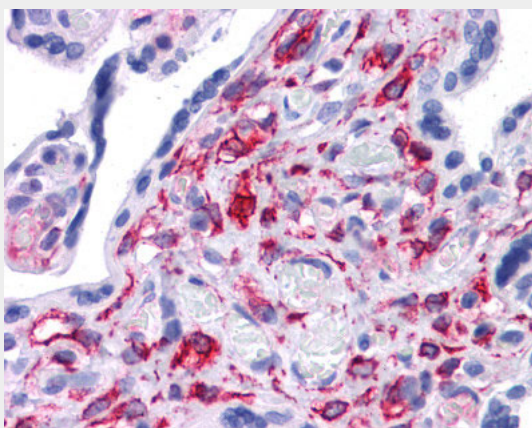
females, and of males.

STAT5B antibody - middle region - Protocols

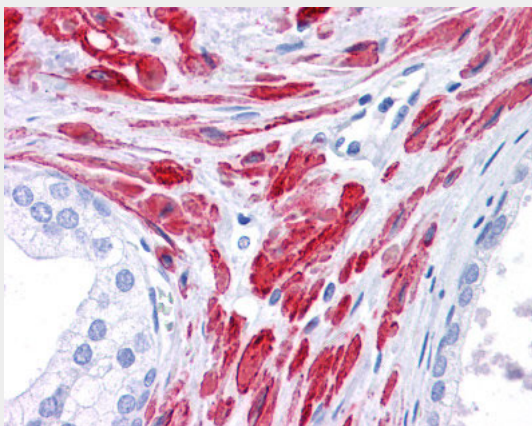
Provided below are standard protocols that you may find useful for product applications.

- [Western Blot](#)
- [Blocking Peptides](#)
- [Dot Blot](#)
- [Immunohistochemistry](#)
- [Immunofluorescence](#)
- [Immunoprecipitation](#)
- [Flow Cytometry](#)
- [Cell Culture](#)


STAT5B antibody - middle region - Images



Human Prostate



Human Prostate



90 kDa__
59 kDa__
38 kDa__

WB Suggested Anti-STAT5B Antibody Titration: 5.0µg/ml

Positive Control: Muscle lysate

STAT5B antibody - middle region - References

Laloraya, M., et al., (2006) Diabetes 55 (3), 734-741
Reconstitution and Storage: For short term use, store at 2-8°C up to 1 week. For long term storage, store at -20°C in small aliquots to prevent freeze-thaw cycles.